

# DATA SHEET

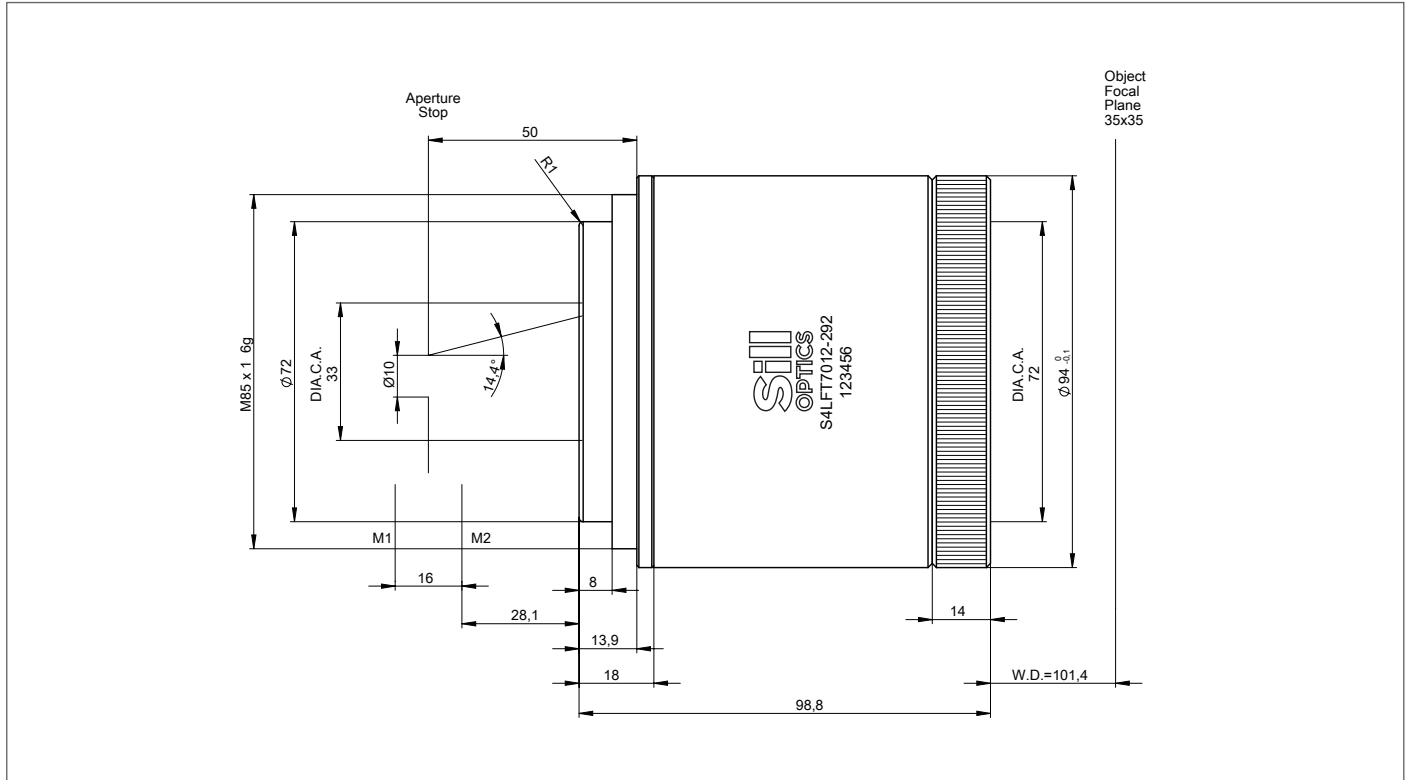
## S4LFT7012-292

F-THETA  
COLOR CORRECTED  
515 - 589 nm



ILLUSTRATION ONLY

### OUTLINE DRAWING



All information contained in this data sheet is for information purposes only and is not binding. The content is subject to change at any time without notification, all information without guarantee. We reserve the right to make constructional changes in the course of product improvement. Copyright © Sill Optics GmbH • All rights reserved

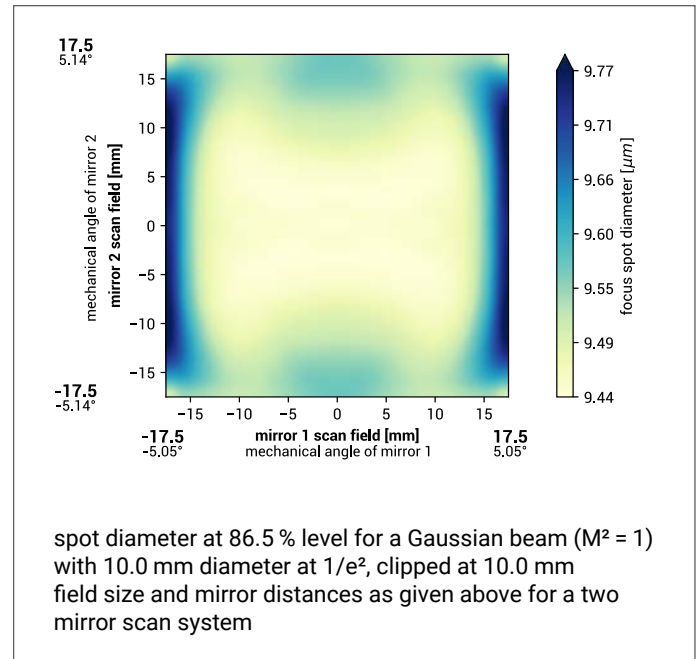
Sill Optics GmbH • Johann-Höllfritsch-Straße 13 • D-90530 Wendelstein • +49 9129 9023-0 • Published: 4.09.2023

# DATA SHEET

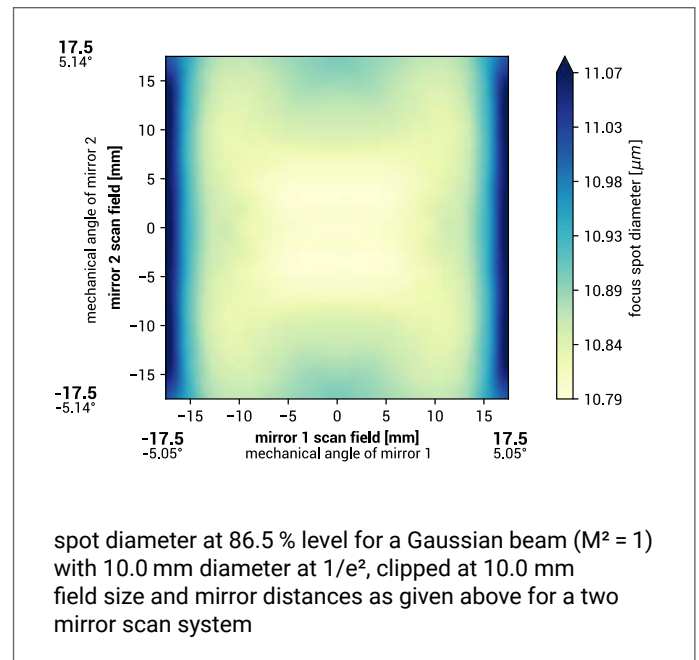
## SPECIFICATIONS

article number	S4LFT7012-292	
design wavelength [nm]	515	589
effective focal length [mm]	100.0	100.0
max. entrance beam-Ø [mm]	10.0	
aperture stop distance [mm]	36.1	
working distance [mm]	101.4	101.4
scan area for a 2 mirror system with mirror distance from lens housing for mirror 2 / mirror 1	35 x 35 36.1 / 52.1	
max. telecentricity error [°]	1.3	1.3
lateral color shift [µm]	0.64	
chromatic focal shift [mm]	0.01	
total transmission [%]	> 96	
lens material	optical glass	
LIDT (coating)	2.5 J/cm <sup>2</sup> per 1ns pulse at 50Hz	
SP and USP usable	yes	
weight [kg]	1.1	
cover glass	S4LPG0005-292	
absorption [ppm]	not specified	
cleanliness	not specified	

## SPOT FOR 515 nm



## SPOT FOR 589 nm



## BACK REFLECTION POSITION

back reflections [mm]		Diagram
for 515 nm	for 589 nm	
6.4	6.4	
215.5	206.5	
0.0	0.0	
0.0	0.0	
0.0	0.0	
0.0	0.0	
0.0	0.0	
0.0	0.0	
0.0	0.0	
0.0	0.0	
0.0	0.0	
0.0	0.0	

## REMARKS

The stated values are based on a vignetting of less than 1 %.

Effective focal length and working distance have tolerance of +/- 1.5 %.

Absorption tolerance +/- 25 %. Absorption may increase. Correct cleaning establishes original condition.

All information contained in this data sheet is for information purposes only and is not binding. The content is subject to change at any time without notification, all information without guarantee. We reserve the right to make constructional changes in the course of product improvement. Copyright © Sill Optics GmbH • All rights reserved

Sill Optics GmbH • Johann-Höllfritsch-Straße 13 • D-90530 Wendelstein • +49 9129 9023-0 • Published: 4.09.2023